

# PREMIUM QUALITY BEVELLING MACHINES



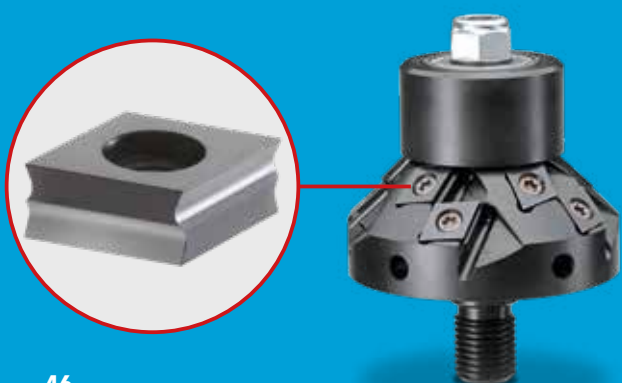
The BDS EKF series is a comprehensive, well-coordinated line of milling machines designed to meet the diverse needs of users across various industries. With the latest innovations and a carefully structured program, every user will find the right machine for their specific application.

The EKF range is available in two performance classes, each engineered to deliver precise and efficient results in minimal time. Whether you're machining steel, stainless steel, non-ferrous metals, brass, or plastic, EKF machines offer reliable performance and exceptional versatility.

All EKF machines are suitable for internal and external contour machining as well as drilling operations. The latest milling cutter technology from BDS ensures not only top-tier results but also user-friendly operation.

A new tangential plate arrangement on the milling heads minimizes impact and vibration, even at lower speeds. Combined with electronic speed control and full-shaft control electronics, the powerful motor allows for smooth processing of a wide range of materials.

Additionally, the new four-edge indexable inserts enhance cutting efficiency and durability—further improving performance and tool life.



## EKF 452.3

Single speed



	Chamfer width up to	Radius 2.5 mm
	Chamfer angle	-
	Insert (quantity)	SHM 202 (3x)
	Milling head	ZFR 452.3
	Motor output	1500 Watts
	Voltage VAC	230; 110/125 V AC
	Speed	6000/min <sup>-1</sup>
	Rotational speed control	
	Full wave control electronics	
	Weight, approx.	4.6 kg

## Scope of delivery EKF 452

Reversible plate (quantity)	SHM 202 (3x)
Milling head	ZFR 452.3
Hook wrench DIN 1810B (34/36)	ZAC 001
Torx screwdriver	0.00002 (T09)
Spanner DIN 894 (22mm)	ZAC 002
Carry case	ZPK 001
Operating instructions	✓

c,

## Accessories EKF 452

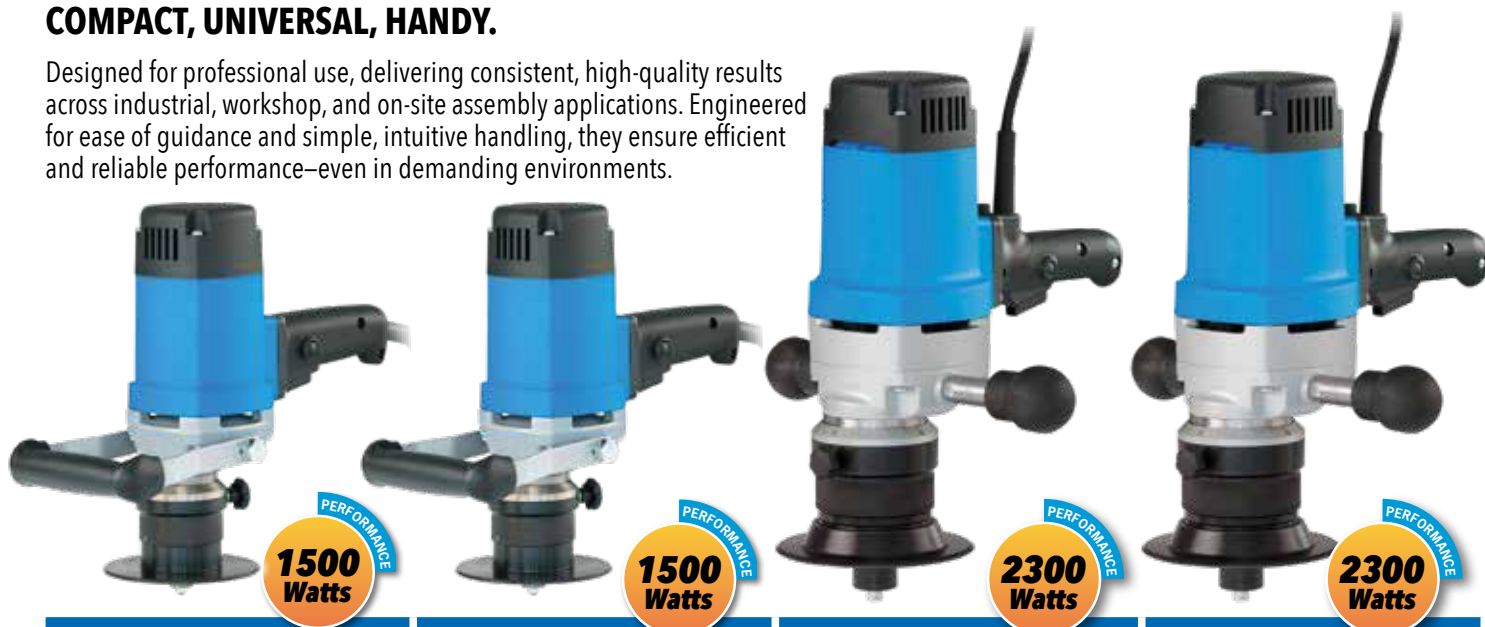
HM-Insert Standard (per piece)	SHM 202 r=2.5 mm SHM 201 r=1.5 mm SHM 200 Standard
HM insert with VarioPLUS coating, HM insert for stainless steel machi- ning (per piece)	
Milling head	ZFR 452.3
Clamping screw for the insert (per piece)	7012021





HM Insert SHM 202  
Milling head ZFR 452.3

## COMPACT, UNIVERSAL, HANDY.

Designed for professional use, delivering consistent, high-quality results across industrial, workshop, and on-site assembly applications. Engineered for ease of guidance and simple, intuitive handling, they ensure efficient and reliable performance—even in demanding environments.



<b>EKF 300.3</b> Single speed		<b>EKF 450.3</b> Single speed		<b>EKF 630</b> With electronic speed control		<b>EKF 645</b> With electronic speed control	
							
1.5 – 5 mm		1.5 – 6 mm		15 mm		15 mm	
30°		45°		30°		45°	
SHM 200 (3x)		SHM 200 (3x)		SHM 900 (10x)		SHM 900 (10x)	
ZFR 300.3		ZFR 450.3		ZFR 630		ZFR 645	
1500 Watts		1500 Watts		2300 Watts		2300 Watts	
230; 110/125 V AC		230; 110/125 V AC		230; 110/125 V AC		230; 110/125 V AC	
6000/min <sup>-1</sup>		6000/min <sup>-1</sup>		1600–3000/min <sup>-1</sup>		1600–3000/min <sup>-1</sup>	
						electronic, stepless	
4.6 kg		4.6 kg		10.2 kg		10.2 kg	
Scope of delivery EKF 300		Scope of delivery EKF 450		Scope of delivery EKF 630		Scope of delivery EKF 645	
SHM 200 (3x)		SHM 200 (3x)		SHM 900 (10x)		SHM 900 (10x)	
ZFR 300.3		ZFR 450.3		ZFR 630		ZFR 645	
ZAC 001		ZAC 001		ZAC 002		ZAC 002	
0.00002 (T09)		0.00002 (T09)		ZTX 15		ZTX 15	
ZAC 002		ZAC 002		ZAC 002		ZAC 002	
ZPK 001		ZPK 001		ZHK 400		ZHK 400	
✓		✓		✓		✓	
Accessories EKF 300		Accessories EKF 450		Accessories EKF 630		Accessories EKF 645	
SHM 200		SHM 200		SHM 900		SHM 900	
SHM 200-E		SHM 200-E		SHM 900-E		SHM 900-E	
ZFR 300.3		ZFR 450.3		ZFR 630		ZFR 645	
7012021		7012021		7012131		7012131	



HM Insert SHM 200-E

ZFR 300.3 / ZFRS 450.3



ZFR 630 / ZFR 645



HM Insert SHM 900

# SHOW A CLEAR EDGE.

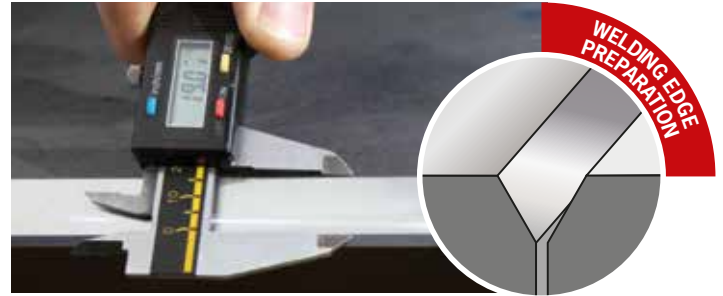
## WITH BEVELLING MACHINES FROM BDS.

Deburring. Weld Preparation. Weld Seam Chamfering. Edge Rounding. BDS beveling machines deliver precision without compromise. Designed for a wide range of applications, they mill edges with

consistently high quality, ensuring clean, accurate results for professional metalworking tasks. Whether you're preparing weld seams or rounding sharp edges, trust BDS for advanced technology, reliable performance, and exceptional finish – every time.



- ▶ Clean, consistent milling edge
- ▶ Easy handling
- ▶ Precise adjustment of the chamfer width



- ▶ Uniform opening angle
- ▶ Easy handling with low material thickness
- ▶ Weld seam preparation on almost all contours



- ▶ To protect against injuries
- ▶ Visual enhancement of components



- ▶ Indispensable in the field of corrosion protection
- ▶ No cracking of the paint layer after drying
- ▶ Better adhesion of paint and powder
- ▶ Rounded edges are essential for components with frequent hand contact



Simple solution, great benefits:  
The guide plate is firmly fixed to the edge of the workpiece and ensures a smooth motion when beveling.

### EKF GUIDE PLATE

The guide plate ensures safe and precise positioning of EKF milling machines. It reliably prevents tilting and slipping, providing greater stability and control during operation. An essential accessory for improved safety and accuracy – a must-have for every professional user.

Order no.

ZFP 100



# WELDING EDGES PERFECTLY PREPARED.

## SKF 25

The BDS Beveling Machine is purpose-built for continuous industrial use, delivering powerful, robust, and highly precise performance. It ensures clean and accurate preparation of welding edges on sheet metal and workpieces of various sizes and materials.

Whether in series production, maintenance operations, or mobile use on construction sites, this machine guarantees outstanding reliability and results.

- ▶ Chamfer width up to 15 mm
- ▶ Stepless angle adjustment from 15° - 60°
- ▶ With ergonomic handle arrangement
- ▶ Easy to guide roller guide
- ▶ Processing of mild steel, aluminum, non-ferrous metal



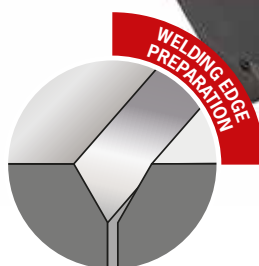
Continuous angle adjustment from 15° to 60°.



Edge processing of pipes in vertical position.



With ergonomic handle arrangement. Easy to guide rollers.



	<b>Chamfer width up to</b>	15 mm
	<b>Chamfer angle</b>	15° - 60° stepless
	<b>Insert (quantity)</b>	SHM 800 (10x)
	<b>Milling head</b>	ZFR 250
	<b>Motor output</b>	1100 Watts
	<b>Voltage VAC</b>	230; 110/125 V AC
	<b>Speed</b>	2850/min <sup>-1</sup>
	<b>Weight, approx.</b>	22 kg

### SKF 25

Weld edge milling machine



#### Scope of delivery SKF 25

Insert (quantity)	SHM 800 (10x)
Milling head	ZFR 250
Allen key	4 mm, 6 mm und 8 mm
Spanner	12 mm
Torx screwdriver (TX 15)	ZTX 15
Carry case	PP container
Operating instructions	✓

#### Accessories SKF 25

Carbide Insert Standard (per piece)	SHM 800
Milling head	ZFR 250
Clamping screw for the insert (per piece)	7012141



Accessorie:  
Milling head ZFR 250



Accessorie: HM-Insert